



RETRÒ SHAWL

MATERIAL

YARN = [Landscape](#) by Laines du Nord, 3 balls col. n. 4
CIRCULAR NEEDLES = 4 mm
OTHER = stitch markers, tapestry needle.

SAMPLE

Stitches and rows = 10 X10 cm in stocking st. with needles 4 mm. Adjust the needles size if it's needed to achieve the correct gauge.

MEASURES

One size

MEASURES OF THE FINISHED GARMENT:

Total length: 60 cm
Width: 150 cm

NOTES

Read the charts from right to left on RS rows and from left to right on WS rows. Odd numbers are RS rows and Even numbers are WS rows.

ABBREVIATIONS

st(s) = stitch(es)
SM = Stitch marker
sSM = slip Stitch marker
K = knit
P = purl
RS = right side
WS = wrong side
R = row
YO = yarn over
K2tog = knit 2 sts together
SKP = slip 1, K1, pass slipped stitch over
SK2P = slip 1, K2tog, pass slipped stitch over
rep** = repeat from * to *

INSTRUCTIONS

Worked back and forth

Garner tab cast on

With needles 4 mm cast on 3 sts

Work 10 rows in garter st. (= K all sts).

Next row (WS): K3, turn the work of 90°, pick up and knit 5 sts along the lateral side; turn the work again of 90°, pick up and knit 3 sts along the cast-on edge. (11 sts)

Work 2 rows in garter st.

R1 (RS): K3, YO, K to 3 sts before end, YO, K3 (13 sts)

R2 (WS): K to the end

R3 (RS): K to the end

R4 (WS): K to the end

R5 (RS): K3, *YO, K1* rep** 7 times, YO, K3. (21 sts)

R6 (WS): K to the end

R7 (RS): K3, *K2tog, YO * rep** to 4 sts before end, K4.

R8 (WS): K to the end

R9 (RS): K3, *YO, K1* rep** 15 times, YO, K3. (37 sts)

R10 (WS): K to the end

R11 (RS): K to the end

R12 (WS): K3, P to 3 sts before end, K3.

R13 (RS): K3, *K2tog, YO * rep** to 4 sts before end, K4

R14 (WS): K3, P to 3 sts before end, K3.

Repeat from Row 11 to Row 14 another 2 times.

R23 (RS): K3, *YO, K1* rep** 31 times, YO, K3. (69 sts)

R24 (WS): K3, P to 3 sts before end, K3.

R25(RS): K to the end

R26 (WS): K3, P to 3 sts before end, K3.

R 27 - 38: K3, CHART A (7 rep), K3.

R39(RS): K to the end

R40 (WS): K3, P to 3 sts before end, K3.

R41 (RS): K3, *K1, YO, K2tog, YO* rep** 21 times, K3. (90 sts)

R42 (WS): K3, P to 3 sts before end, K3.

R43 (RS): K to the end

R44 (WS): K to the end

R45 (RS): K3, *K2tog, YO * rep** to 3 sts before end, K3.

R46 (WS): K3, P to 3 sts before end, K3.

R47 (RS): K to the end

R48 (WS): K3, P to 3 sts before end, K3.

Repeat from Row 45 to Row 48 another 3 times.

R61 (RS): K to the end

R62 (WS): K3, P to 3 sts before end, K3.

R63 (RS): K3, *K1, YO, K1 * rep** 42 times, K3. (132 sts)

R64 (WS): K3, P to 3 sts before end, K3.

R 65 - 84: K3, CHART B (9 rep), K3

R85 (RS): K to the end

R86 (WS): K3, P to 3 sts before end, K3.

R87 (RS): K3, *K1, YO, K1 * rep** 63 times, K3. (195 sts)

R88 (WS): K3, P to 3 sts before end, K3.

R89 (RS): K to the end

R90 (WS): K to the end

R91 (RS): K3, *K2tog, YO * rep** to 4 sts before end, K4

R92 (WS): K to the end

Repeat Rows 91 and 92 another 7 times.

R107 (RS): K3, *K1, YO, K2tog, YO* rep** 63 times, K3. (258 sts)

R108 (WS): K3, P to 3 sts before end, K3.

R 109 - 132: K3, CHART A (28 rep), K3.CHART A is worked 2 times in total.

R133 (RS): K to the end

R134 (WS): K3, P to 3 sts before end, K3.

R135 (RS): K3, *K2tog, YO * rep** to 4 sts before end, K4

R136 (WS): K3, P to 3 sts before end, K3.

Repeat from Row 133 to Row 136 another 5 times.

R157 (RS): K to the end

R158 (WS): K3, P to 3 sts before end, K3.

R159 (RS): K3, *K1, YO, K2tog, YO* rep** 84 times, K3. (342 sts)

R160 (WS): K3, P to 3 sts before end, K3.

R 161 - 180: K3, CHART B (24 rep), K3.

R181 (RS): K to the end

R182 (WS): K3, P to 3 sts before end, K3.

R183 (RS): K3, *K1, YO, K1 * rep** 168 times, K3. (510 sts)

R184 (WS): K3, P to 3 sts before end, K3.

R185 (RS): K to the end

R186 (WS): K to the end

R187 (RS): K3, *K2tog, YO * rep** to 4 sts before end, K4

R188 (WS): K to the end

Repeat Rows 187 and 188 another 3 times.

R195 (RS): K to the end

R196 (WS): K to the end

Repeat Rows 195 and 196 another 2 times.



KNITTING PASSION

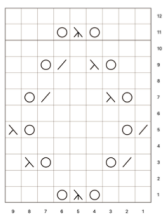
Cast off all stitches



IMAGES



SCHEMA A



LEGENDA

- drsu LD, r su LR
- r su LD, dr su LR
- get
- 2ins
- acc
- accd

SCHEMA B

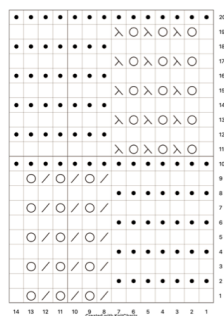
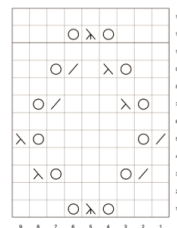


CHART A



KEY

- K on RS, P on WS
- P on RS, K on WS
- YO
- K2tog
- SKP
- SK2P

CHART B

