



## PULL CANDY

### MATERIAL

**YARN**= "Poema" by "Laines du Nord": Color 220: 2 balls

**CIRCULAR NEEDLES** = 3,5 and 4 mm( cables 100 cm and 60 cm for sleeves)

**OTHER** = stitch markers, tapestry needle.

### MEASURES

**SIZES - S (M,L)**

### MEASURES OF THE FINISHED GARMENT:

#### Size S

Bust circumference: 91 cm

#### Size in photos: M

Bust circumference: 100 cm

#### Size L

Bust circumference: 110 cm

### ARM CIRCUMFERENCE

Size S: 31 cm

Size L: 33 cm

Size M: 37 cm

## SAMPLE

24 stitches and 30 rows = 10 X10 cm in stocking st.  
with needles **4 mm**. Adjust the needles size if it's  
needed to achieve the correct gauge.

## POINTS USED

**Stocking stitch;**  
**1/1 rib st: All rounds: \*K2, P2 \* rep \*\* to the end.**

## NOTES

This tee is worked in the round from the top down, with circular yoke.

## ABBREVIATIONS

**st(s)**= stitch(es);  
**SM**= stitch marker;  
**SMB**= stitch marker of the beginning of the round;  
**sSM**= slip SM;  
**K** = knit;  
**P** = purl;  
**RS** = right side;  
**WS** = wrong side;  
**K2tog** = knit 2 sts together;  
**SKP**= slip 1, K1, pass slipped stitch over;  
**YO** = yarn over  
**m1** = make one by picking up one a loop between two stitches and knitting into the back of the new stitch.  
**rep \*\***= repeat from \* to \*

## INSTRUCTIONS

### YOKE

With needles 3,5mm cast on 104 (108, 114) 1 sts, insert the marker to mark beginning of row, **SMB**, and start to work in the round ensuring that the work is not twisted (to join in the round: Ktog the first and the last cast-on stitch). [= 104 (108, 114) sts]

**Rounds 1 - 10:** \* K1, P1 \* rep\*\* to the end.

**Change to needles 4 mm**

**Rounds 11 - 13:** K all sts

**Round 14:** K and increase evenly 28 (36, 42) sts (= m1). [ 132 ( 144, 156 ) sts]

**Rounds 15 -16:** K all sts

**Rounds 17 - 24:** follow **CHART A** from right to left

**Rou**

**nds 25 - 27:** K all sts

**Round 28:** K and increase evenly 48 (48, 52) sts (m1) [ 180 (192, 208 ) sts]

**Rounds 29 - 31:** K all sts

**Round 32:** P all sts

**Round 33:** \* K2tog, YO \* rep\*\* to the end

**Round 34:** P all sts

**Rounds 35 - 38:** K all sts

**Round 39:** K and increase evenly 48 (48, 44) sts (m1) [ 228 ( 240, 252 ) sts]

**Rounds 40 - 42:** K all sts

**Rounds 43 - 50:** follow **CHART A** from right to left

**Rounds 51 - 53:** K all sts

**Round 54:** \* K3, m1 \*. [ 304 ( 320, 336 ) sts]

**Rounds 55 - 68:** K all sts

**Rounds 69:** K and increase evenly 64 ( 80 , 104 ) sts (m1)[ 368 ( 400, 440 ) sts]

**Rounds 70 - 77 :** K all sts

**Only size L:** K 5 rounds

**Place the sts for each sleeve onto holder or scrap yarn:**

Place the first 74 (80, 88 ) sts onto holder or scrap yarn (first sleeve), K 110 (120, 132 ) (front), place 74 (80, 88 ) sts onto holder or scrap yarn (second sleeve), K 110 (120, 132 ) (back).

Body sts: 220 (240, 264)

**Body**

**Round 1:** K 110 (120, 132), SM (side), K 110 (120, 132).

**Decrease round:** K2tog, K to 3 sts before SM, SKP, K1, sSM, K2tog, K to 3 sts before end, SKP, K1.

K 12 rounds

**Decrease round:** K2tog, K to 3 sts before SM, SKP, K1, sSM, K2tog, K to 3 sts before end, SKP, K1.

K 12 rounds

**Decrease round:** K2tog, K to 3 sts before SM, SKP, K1, sSM, K2tog, K to 3 sts before end, SKP, K1.

K 40 (42, 46) rounds

**Hem**

**Round 1:** P

**Round 2:** \* K2tog, YO \* rep\*\* to the end

**Round 3:** P

**Rounds 4,5,6 :** K

**Repeat from Row 1 to Row 6 one more time**

**Change to needles 3.5 mm**

**Work 10 rounds 1/1 rib st:** \* K1, P1 \* rep\*\* to the end.

Cast off all sts

## SLEEVES

Slip the **74 (80, 88)** held **stitches** from holderto **4 mm needles**. Place the **SM** in the center of the underarm sts and start working in the round. [74 (80, 88) sts ]

**Round 1:** P

**Round 2:** \* K2tog, YO \* rep\*\* to the end

**Round 3:** P

K 54 ( 54, 56 ) rounds

**Work 6 rounds in 1/1 rib sr:** \* K1, P1 \* rep\*\* to the end

Loosely cast off.

MAKE THE SECOND SLEEVE.

Weave in all ends. Wash and block garment carefully.



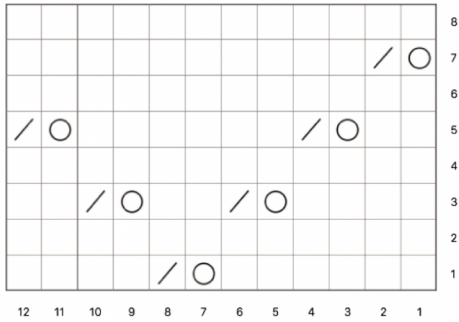
## IMAGES

---





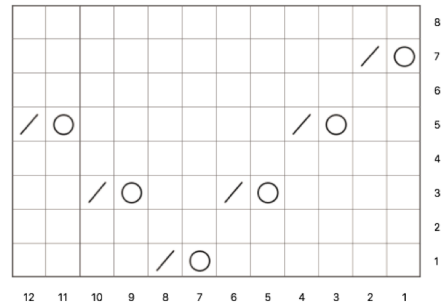
**SCHEMA A**



**LEGENDA**

- dr
- get
- /

**CHART A**



**KEY**

- K
- YO
- /