



ECOTONE OPENWORK CARDIGAN

MATERIAL

YARN = 600 grams of col. 13 (red) [ECOTONE](#) by LAINES DU NORD

CROCHET-HOOK = size 4 and 5 mm

OTHERS = darning needle, stitch marker, scissors, tape measure.

POINTS USED

Chain stitch, slip stitch, single crochet, treble crochet.

Back post single crochet: insert the crochet-hook into the back thread of base st. and work sc.

Openwork honeycomb stitch: multiple of 6 sts. 3 sts. following diagram and pattern.

MEASURES

SIZE: S (M; L; XL)

The picture refers to size S. Numbers or letters into the brackets refers to other sizes.

NOTES

SKILL LEVEL: Experienced

Cardigan consists of one panel. Beginning from lower band of back, then continue shaping the sleeves and, at shoulders, for neckline shaping, divide the panel in two pieces. Complete the sleeves and, at last, work right and left front separately. After sewing sides and undersleeves, join the cuffs and front band.

ABBREVIATIONS

RS = right side of work
WS = wrong side of work
SM = stitch marker
st. / es = stitch / es
ch = chain stitch
col. = color
chain stitch = ch
slip stitch = sl st
single crochet = sc
treble crochet = tr
back post single crochet = BPsc
rep. = repeat / ing
fol. = follow / ing

INSTRUCTIONS

BACK

Rib band

Using size 4 mm crochet-hook, cast-on 13 ch.

1st row: 1 sc in 2nd ch from hook and each of next 11 ch, 1 turning ch (never count it like one st.). [12 sc]

2nd row: 1 BPsc in each base st., 1 turning ch.

Rep. 1st row until 81(87; 93; 99) row.

Body

Turn panel and continue on long side of rib band.

Using size 5 mm crochet-hook, start working in openwork honeycomb stitch (diagram).

1st row (RS): 1 ch, 1 sc into same base st. of ch, 1 sc into the end of every row of band, considering that you must have number of sc multiple of 6 sts. 3 sts. (for size S: 13 multiples of 6 3 = 81 sc), 1 turning ch (do not count turning ch like 1 st.).

2nd row (WS): 1 sc in each of first 3 sc, (5 ch, skip 3 sc, 1 sc in each of next 3 sts.) until the end, 1 turning ch.

3rd row: 1 sc in each of first 2 sc, (5 sc in next 5-ch-arch, 1 sc in 2nd of next 3-sc-group) rep. until the end, 1 sc in

each of last 2 sc of row, 1 turning ch.

4th row: 6 ch (= 1st tr 2 ch), skip first 2 sc, 1 sc in each of next 3 sc, (5 ch, skip 3 sc, 1 sc in each of next 3 sc) rep. until 3 sc before the end, 2 ch, skip 2 sc, 1 tr in last sc, turn.

5th row: 1 ch and 1 sc in 1st st., 2 sc in 1st 2-ch-space, 1 sc in central sc of next 3-sc-group, (5 sc in next 5-ch-arch, 1 sc in central sc of next 3-sc-group) rep., until the end, 2 sc in last 2-ch-space, 1 sc in 4th of 6 beg. ch of prev. row, turn.

Section from 2nd to 5th row, is the repetition module of openwork honeycomb stitch.

Rep. from 2nd to 5th row reaching 19-20 cm in height (11 holes vertically), at last do not turn and leave the working ring.

Across the pattern we call the ch-arches: "hole".

Body and sleeves

For base sleeves shaping, add ch at beginning and end of panel.

Make sure it's on RS of panel.

Cast-on 60 ch and join them with 1 sl st in 1st sc on the right of last worked row of panel (RS). Cut and tie off the yarn.

Hook the loop you have left at the end of last worked row of panel (RS) and cast-on 60 ch 1 turning ch, then cont. in openwork honeycomb stitch according to the pattern, working on new cast-on ch of 1st sleeve, on sts. of body and on new cast-on ch of 2nd sleeve. [10 arches on 1st sleeve, 14 arches on body and 10 arches on 2nd sleeve, for size S]

From cast-on ch of the sleeves, work 17 (20; 22; 24) rows in openwork honeycomb stitch.

Neckline

After working the 41st row from rib band (17 rows from beg. of the sleeves), for neckline shaping, divide the panel, and cont. working 2 sleeves separately.

To mark the neckline opening (18 cm width), place 2 SM. From cuff to shoulder, count 15 arches and place 1 SM; rep. the same for second sleeve.

Cont. working right sleeve at first and then left sleeve separately at both sides of neckline.

RIGHT FRONT

Right Sleeve

From 1st to 8th (10th, 12th, 14th) row: cont. in open-work st. according to the pattern, restarting from point where you have suspended the working (it's different depending on number of rows you have worked for your size).

9th (11th; 13th; 15th) row: for V neckline shaping, add 1 5-ch-arch on side of neckline (for other sizes add 1 arch in one or more rows, always on side of neckline).

Work 15 (17; 19; 21) rows more, according to pattern of open-work st.

The sleeve measures 40 cm (from cuff to armpit) approx., with 22 holes vertically (11 holes on back and 11 holes on front) for size S.

Right front panel

Before continuing, insert 1 SM at side edge of body (back panel), to align the beginning of body of front panel with body of back panel.

This SM marks the beginning of front panel sts.; for size S there are 11 holes on side of SM for the sleeve and 5 holes on the other side of SM for front panel of body (5 holes = 4 arches 1 half arch).

Cont. in open-work st. according to the pattern, working only on sts. of front panel (from SM) and breaking the working of sleeve.

After 19 rows (for size S), the panel measures 19-20 cm approx. in height with 10 holes vertically and 17 cm in width with 5 holes horizontally. At last, do not cut the yarn.

Rib band of front right panel

Using size 4 mm crochet-hook, cast-on 13 ch.

1st row: 1 sc in 2nd ch from hook and in each of next 11 ch, skip the st. at base of 13 ch and work 1 sc in next sc of the panel, turn.

2nd row: 12 BPsc, 1 turning ch.

3rd row: 12 BPsc, skip the sc of panel corresponding to row of band you have just worked, and work 1 sc in next st., turn.

Rep. 2nd and 3rd row until end of 26th row or as many rows as necessary for width of front panel.

Cut and tie off the yarn.

LEFT FRONT

Work the left front (sleeve, front panel and rib band) as given for right front reversing all shaping, beginning on side of neckline where's 2nd SM.

FINISHING

Fold panel in half, placing 2 fronts and 2 front halves of sleeves on back and on back and on 2 back halves of sleeves (RS against RS), then using the darning needle join the edges along undersleeve and side seams.

Cuffs (x 2)

Before working the cuff, give the finishing touch to lower edge of sleeve.

Finishing round: using size 4 mm crochet-hook, join yarn and work 1 ch, 1 sc in

each st. and 2 sc in each ch-space, close with 1 sl st in beg. sc.

Cast-on 13 ch.

1st row: 1 sc in 2nd ch from hook and in each of 11 next ch, skip the st. at base of 13 ch and work 1 sc in next st. of sleeve, turn.

2nd row: 12 BPsc, 1 turning ch.

3rd row: 12 BPsc, skip the sc of sleeve corresponding to row del of cuff you have just worked and work 1 sc in next st., turn.

Rep. 2nd and 3rd row around the circumference. Cut yarn leaving 25 cm tail and use it to sew first and last row of the cuff on WS.

Cut and tie off the thread.

Work one round in sc around the lower edge of second sleeve, then work second cuff as given for first one.

Rib band of front opening and neckline

Using size 4 mm crochet-hook, join the yarn at lower corner of right panel (RS).

1st row: 1ch (do not count it like 1 st.), 1 sc in the same base st. of ch, 1 sc in each st. and 2 sts. in each ch-space along edge of right front, of neckline and of left front, 1 turning ch (do not count the turning ch like one st.).

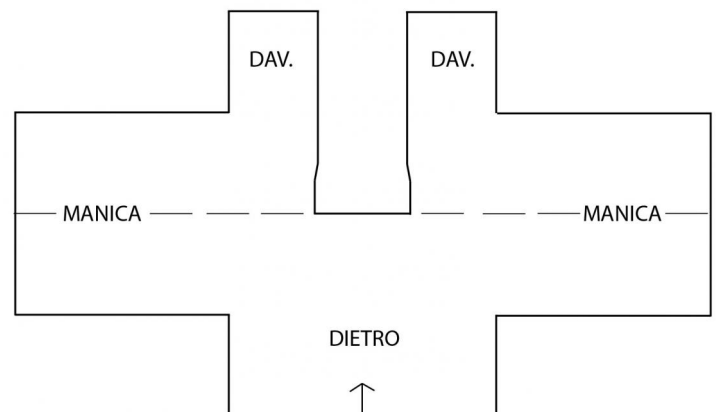
From 2nd to 9th row: 1 BPsc in each st. of the row, 1 turning ch.

Using the darning needle, hide the ends on WS.

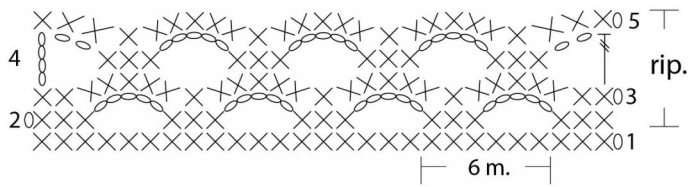
IMAGES



PANNELLO PRINCIPALE DEL CARDIGAN



Punto nido d'ape traforato



Legenda

- cat
- × m. bassa
- ⌘ m. alta doppia