



CLOVE BIKINI

MATERIAL

YARN = "[Summer Vibes](#)" by "Laines du Nord": 1 ball x 50 grams of white col. and 1 ball of col. 4

CROCHET-HOOK = size 4.5

OTHERS = darning needle, scissors, pins, marker.

MEASURES

SIZE: S

POINTS USED

Chain stitch, single crochet, half treble crochet, treble crochet, double crochet.

NOTES

SKILL LEVEL: Easy

ABBREVIATIONS

RS = right side of work
WS = wrong side of work
st./ sts. = stitch / stitches
ch = chain stitch
col. = colour
sc = single crochet
dc = double crochet
h-tr = half treble crochet
tr = treble crochet
rep. = repeat
foll. = follow / following
cont. = continue
prev. = previous

INSTRUCTIONS

BIKINI BRA

Using 2 different colours of same ball, shape 2 triangles.

First bra-cup (triangular shape)

Using the colour you prefer, cast-on 8 ch and close in ring shape with 1 sc in beg. ch.

1st round: 3 ch (= 1st tr, also in next r.), 5 tr inside the ring, (4 ch, 5 tr) inside the ring; close with 2 ch and 1 h-tr in 3rd beg. ch. [3 groups of 5 tr, 3 space of ch]

Cont. following the triangular motif of diagram 1 until the end of 7th round.

Cut and tie off the thread.

Second bra-cup (triangular shape)

Using different colour, work as given for first bra-cup until at 6th round then, across the 7th round joint the two bra-cups.

7th round: 3 ch, 2 tr in same base space of 3 ch, 1 tr in each tr until next ch-corner-space, (3 tr, 3 ch, 3 tr) in corner-space, 1 tr in each tr until next ch-corner-space, 3 tr in space-corner, 9 ch (= 2 ch for corner shaping 7 joining ch), 1 sc in the corresponding corner of first bra-cup, turn and work 1 sc in first 7 ch of 9-ch-group, 1 ch to complete the corner-space of this motif, 3 tr in the corner-space of prev. 3 tr, 1 tr in each tr until next corner, 3 ch; 1 sc in 3rd beg. ch. Cut end tie off the yarn.

Open-work lower band of the bra

Use different col. yarn.

Turn 2 bra-cups upside down (points facing downwards) and on WS, join the yarn at right corner, then work 1 row in dc along the lower edge of 2 cups and of 7-ch-central-group like shown by the diagram 1. After reaching the left corner, turn and work 5 rows more, always according to the red highlighting of diagram 1.

FINISHING

At the end of 6th row of open-work band, do not turn and do not cut the yarn, then continue in dc along the 1st short side of open-work band, around the top edge of bra, working (2 dc, 2 ch, 2 dc) in 3-ch-space of the point of each bra-cup and along the 2nd short side of open-work band, at last close with 1 sc in 1st dc of 6th row of the open-work band.

Work the second round in dc around the perimeter of the bra, always working (2 dc, 2 ch, 2 dc) in 2-ch-space of the cup points.

Cut and tie off the yarn. Hide the ends inside the fabric.

Laces: refer to the photos, shape 4 ch-laces of the desired length, to fasten the bra behind: neck and back. Shape some tassels and sew 1 tassel at the ends of the laces.

BRAZILIAN PANTIES

The panties consist of 2 panels: front and back.

PANEL (x 2)

Hexagon

Using the colour you prefer, shape a magic ring.

1st round: 3 ch (= 1st tr, also in next r.), 2 tr inside the ring, (2 ch, 3 tr) 5 times; pull the end of the yarn to tighten the ring, then close with 1 ch and 1 dc in 3rd beg. ch. [6 groups of 3 tr, 6 spaces of ch]

Cont. foll. the diagram 2 until you have worked the 6th row of the hexagon, at last, do not cut the yarn and begin the first side strip.

First side strip

1st row: 3 ch, 1 tr in 3rd beg. ch of 6th round of the hexagon, 1 tr in each of 11 tr along 1st side of the hexagon, 2 tr tog. (work the 1st leg in last tr of the same side and 2nd leg in next corner-space), turn.

Cont. foll. the red section of the diagram 2, rep. 2nd and 3rd row until you have worked the 13th row, then work 5 rows more, decr. 1 st. on both sides of every row, like shown. Cut and tie off the thread.

Second side strip

Skip one side of the hexagon and along the opposite side, work second strip as given for first one.

Lower strip

Skip one side of the hexagon and along the opposite side, work 17 rows as give for first 2 strips, whereas across 18th row work 1 tr in each st.

At the end of 18th row, do not cut the yarn and on RS, work one round in dc around the panel. Cut and tie off the thread.

FINISHING

Place one panel on the other one (RS against RS) and on WS, join the 18th row of 2 lower strips (crotch of the panties).

Hide the ends inside the fabric.

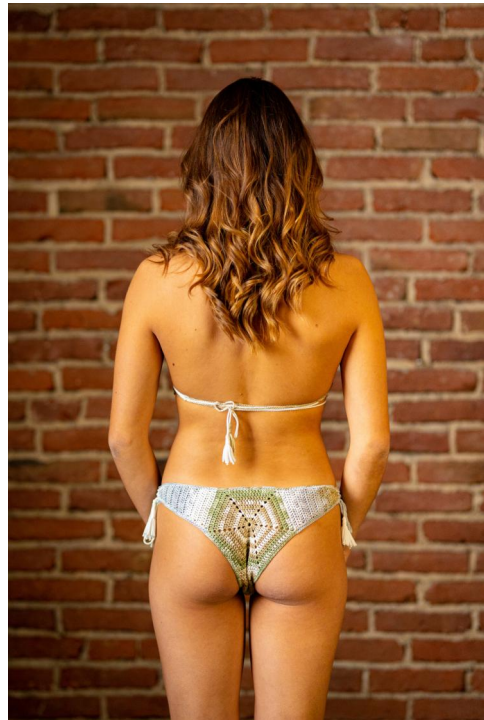
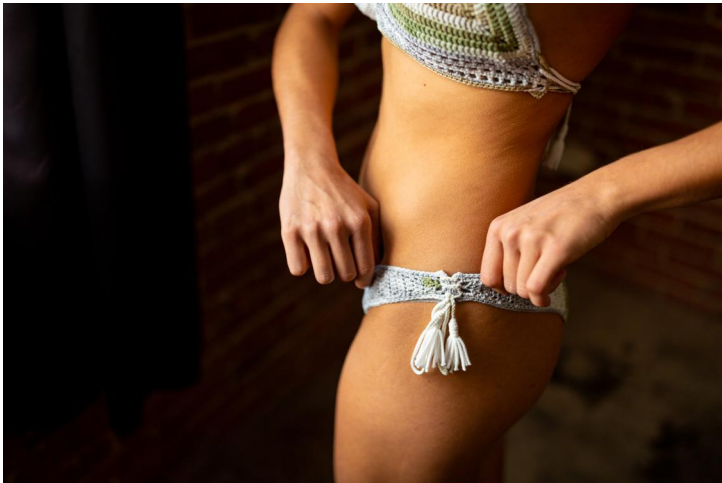
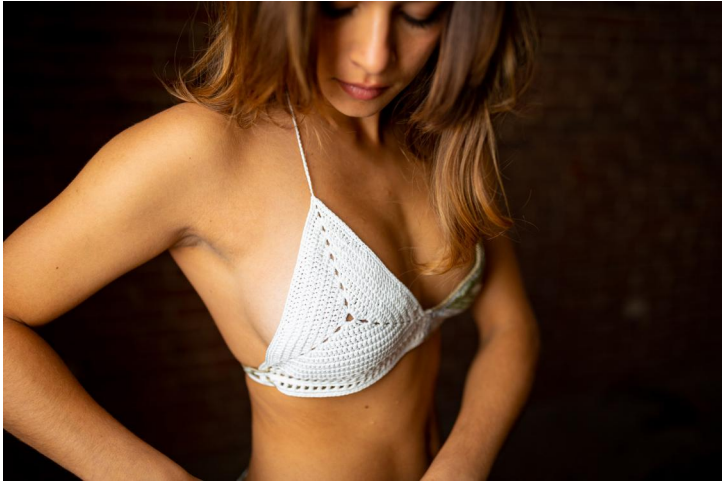


KNITTING PASSION

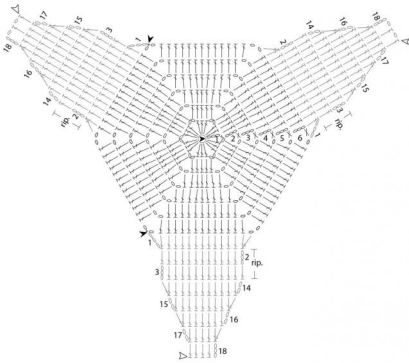
Work 2 laces as made for bra. Pass each lace through the empty squares of the corresponding side strips and close the sides of the panties with one bow.

Shape 2 tassels and sew them at the end of each lace.

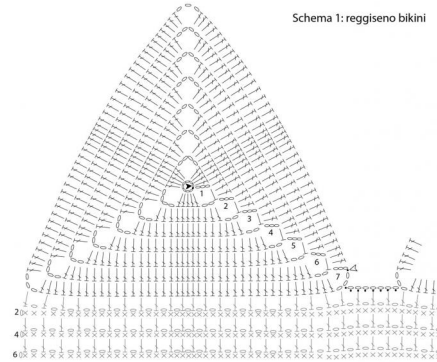
IMAGES



Schema 2: slip (parte anteriore o posteriore)



Schema 1: reggiseno bikini



Legenda

- ▲ inizio
- △ fine
- catenella
- m. bassissima
- × m. bassa
- † mezza m. alta
- ‡ m. alta
- ∩ 2 m. alte chiuse ins.