



CANYON JERSEY

MATERIAL

YARN= "[Poema Nuance](#)" by "Laines du Nord": Color 215: 2 (2, 3) balls

CIRCULAR NEEDLES = 4 mm (cables 100 cm and 60 cm for sleeves)

OTHER = stitch markers, tapestry needle.

SAMPLE

23 stitches and 32 rows = 10 X10 cm in stocking st. with needles **4 mm**. Adjust the needles size if it's needed to achieve the correct gauge.

MEASURES

SIZES - S (M,L)

MEASURES OF THE FINISHED GARMENT:

Size in photos: M

Bust circumference: 102 cm

Total length: 50 cm

Length from underarm to hem: 34 m

Sleeve circumference: 32 cm

POINTS USED

Stocking stitch;

1/1 rib st: * K1, P1 * rep ** to the end; Next Round: work sts as they appear.

NOTES

This project is worked in rounds from the bottom up in one piece until the underarm. The upper part is worked back and forth in two separate pieces, front and back. Sleeves are worked in rounds picking up stitches along the armhole.

Chart: read the chart from right to left and from the bottom up. For the contrasting color use the yarn on the other end of the ball.

ABBREVIATIONS

st(s): stitch(es);
SM: stitch marker;
SMb: stitch marker of the beginning of the round;
sSM: slip SM;
K: knit;
P: purl;
RS: right side;
WS: wrong side;
K2tog: knit 2 sts together;
SKP: slip 1, K1, pass slipped stitch over;
rep **: repeat from * to *
MC: main color;
CC = contrasting color, use the yarn on the other end of the ball.

INSTRUCTIONS

With **needles 4 mm** cast on **216 (234, 258)**, insert the marker to mark beginning of row, **SMb**, and start to work in the round ensuring that the work is not twisted.

Rounds 1 - 8: * K1, P1 * rep ** to the end.

Knit 6 rounds.

Follow CHART (for the contrasting color use the yarn on the other end of the ball.)

Work in **stocking st.** (K all rounds) until the sweater measures about 34 cm from the beginning.

FRONT [108 (117, 129) sts]

Now divide the work in two parts and **work back and forth** only on the first half of stitches.

[108 (117, 129) sts]

Row 1 (RS): cast off 4 sts, K to the end. [104 (113, 125) sts]

Row 2 (WS): cast off 4 sts, P to the end. [100 (109, 121) sts]

Row 3 (RS): K2, SKP, K to 4 sts before end, K2tog, K2 [98 (107, 119) sts]

Row 4 (WS): P to the end

Work 48 (50, 54) rows in stocking st.

Neckline

Work on the first 34 (38, 42) sts on needles.

Leave on hold the 30 (31, 35) central sts.

First shoulder

RS: K 34 (38, 42), turn.

WS: P 34 (38, 42).

RS: K to 4 sts before end, K2tog, K2.

WS: P.

RS: K to 4 sts before end, K2tog, K2.

WS: P.

RS: K to 4 sts before end, K2tog, K2.

WS: P.

RS: K to 4 sts before end, K2tog, K2. 30 (34, 38) sts.

WS: P.

Work 2 rows in stocking st.

Second shoulder

RS: K 34 (38, 42), turn.

WS: P 34 (38, 42).

RS: K2, SKP, K to the end.

WS: P.

RS: K2, SKP, K to the end.

WS: P.

RS: K2, SKP, K to the end.

WS: P.

RS: K2, SKP, K to the end. 30 (34, 38) sts.

WS: P.

Work 2 rows in stocking st.

BACK [108 (117, 129) sts]

Work back and forth the other half of stitches. [108 (117, 129) sts]

Start from RS.

Row 1 (RS): cast off 4 sts, K to the end. [104 (113, 125) sts]

Row 2 (WS): cast off 4 sts, P to the end. [100 (109, 121) sts]

Row 3 (RS): K2, SKP, K to 4 sts before end, K2tog, K2 [98 (107, 119) sts]

Row 4 (WS): P to the end

Work 60 (62, 66) rows in stocking st.

Leave sts on hold.

SHOULDER

Sew with the **Kitchener Stitch** the 30 (34, 38) stitches for each shoulder, joining the front at the back.

Leave the central 30 (31, 35)sts on hold for the neck.

SLEEVES (X2)

Work in round

With 4 mm needles pick up and knit 70 (74, 82) stitches along the armhole.

Place SM at the underarm and start working in the round.

Knit 120 rounds (about 37 cm)

Decrease round: K and decrease evenly 28 (30, 36) sts (K2tog). [42 (44, 46) sts]

Cuff

Rounds 1- 20: * K1, P1 * rep ** to the end

Cast off all stitches.

Make the second sleeve.

NECK

With 4 mm needles pick up and knit 86 (90, 98) stitches along the neckline.

Place SM and start working in the round as follows:

Rounds 1 - 10: * K1, P1 * rep ** to the end

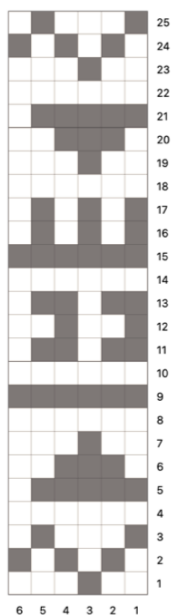
Loosely cast off.

Weave in all ends. Wash and block garment carefully.

IMAGES



SCHEMA A



LEGENDA

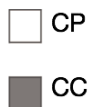


CHART A



KEY

